

425

MARKET STREET

SAN FRANCISCO, CA



EXCLUSIVE AGENTS

J.D. LUMPKIN

EXECUTIVE DIRECTOR - Lic. #01215057
jd.lumpkin@cushwake.com
415-658-3648

MATTHEW N. GRIFFIN

SENIOR DIRECTOR - Lic. #01344600
matt.griffin@cushwake.com
415-773-3590

MARK J. ANDERSON

EXECUTIVE DIRECTOR, LEED AP - Lic. #01325399
mark.anderson@cushwake.com
415-773-3583

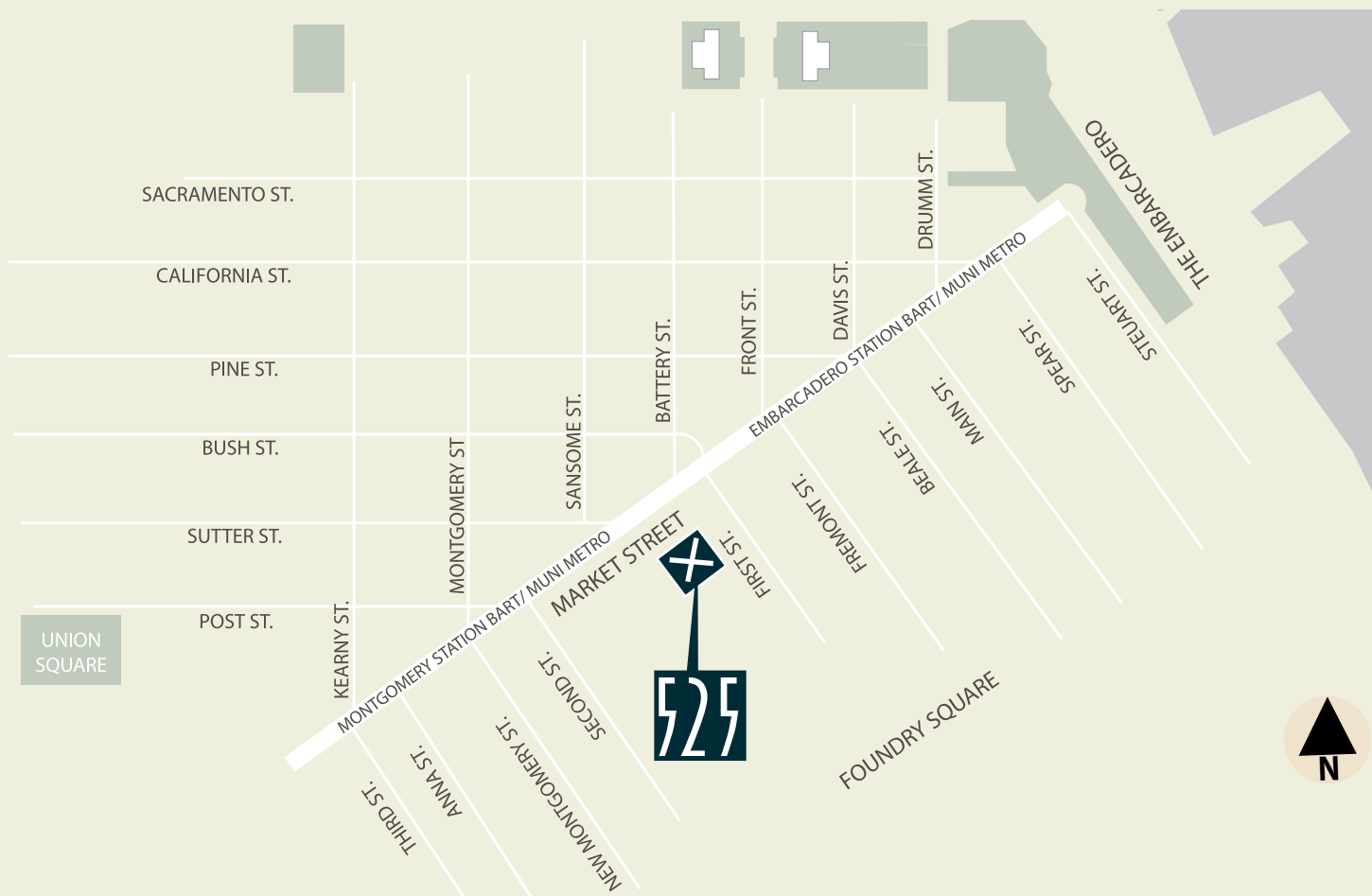


425 MARKET ST, STE 2300, SAN FRANCISCO
LIC. #00616335



525 MARKET STREET

SAN FRANCISCO, CA



LOCATION AMENITIES:

- Immediate access to BART, MUNI, and Transbay Terminal.
- Restaurants, hotels, shopping centers, and other services are all within walking distance.
- On-site parking & sundries shops.
- Large efficient floorplates - 28,500 sf (+/- 12% full-floor load factor)

EXCLUSIVE AGENTS

J.D. LUMPKIN
EXECUTIVE DIRECTOR - LIC. # 01215057
jd.lumpkin@cushwake.com
415-658-3648

MATTHEW N. GRIFFIN
SENIOR DIRECTOR - LIC. #01344600
matt.griffin@cushwake.com
415-773-3590

MARK J. ANDERSON
EXECUTIVE DIRECTOR, LEED AP- LIC. #01325399
mark.anderson@cushwake.com
415-773-3583

No warranty or representation, expressed or implied, is made as to the accuracy of the information contained herein, and same is submitted subject to errors, omissions, change of terms, rental or other conditions, withdrawal without notice, prior sale and to any special listing conditions imposed by principals.
CUSHMAN & WAKEFIELD | LIC. #00616335 | 425 MARKET ST, STE 2300, SAN FRANCISCO, CA 94105





BREATHTAKING VIEWS

CURRENT AVAILABILITIES

FLOOR	RSF	DESCRIPTION
2	20,105	Incredible opportunity for creative environment with exceptional visibility from Market Street. Soaring ceiling heights and flexible floor plan with an estimated delivery for tenant improvements of 7/1/2015.
7	3,001	5 windowline private offices, 1 interior conference room, open area.
8	28,360	23 windowline private offices, 1 small conference room, 1 large boardroom, high-density file room, larger server room, lunch room, large open area.
18	4,152	3 windowline private offices, 1 internal private office, kitchen, copy room, 1 conference room, open space.

EXCLUSIVE AGENTS

J.D. LUMPKIN
 EXECUTIVE DIRECTOR - LIC. # 01215057
 jd.lumpkin@cushwake.com
 415-658-3648

MATTHEW N. GRIFFIN
 SENIOR DIRECTOR - LIC. #01344600
 matt.griffin@cushwake.com
 415-773-3590

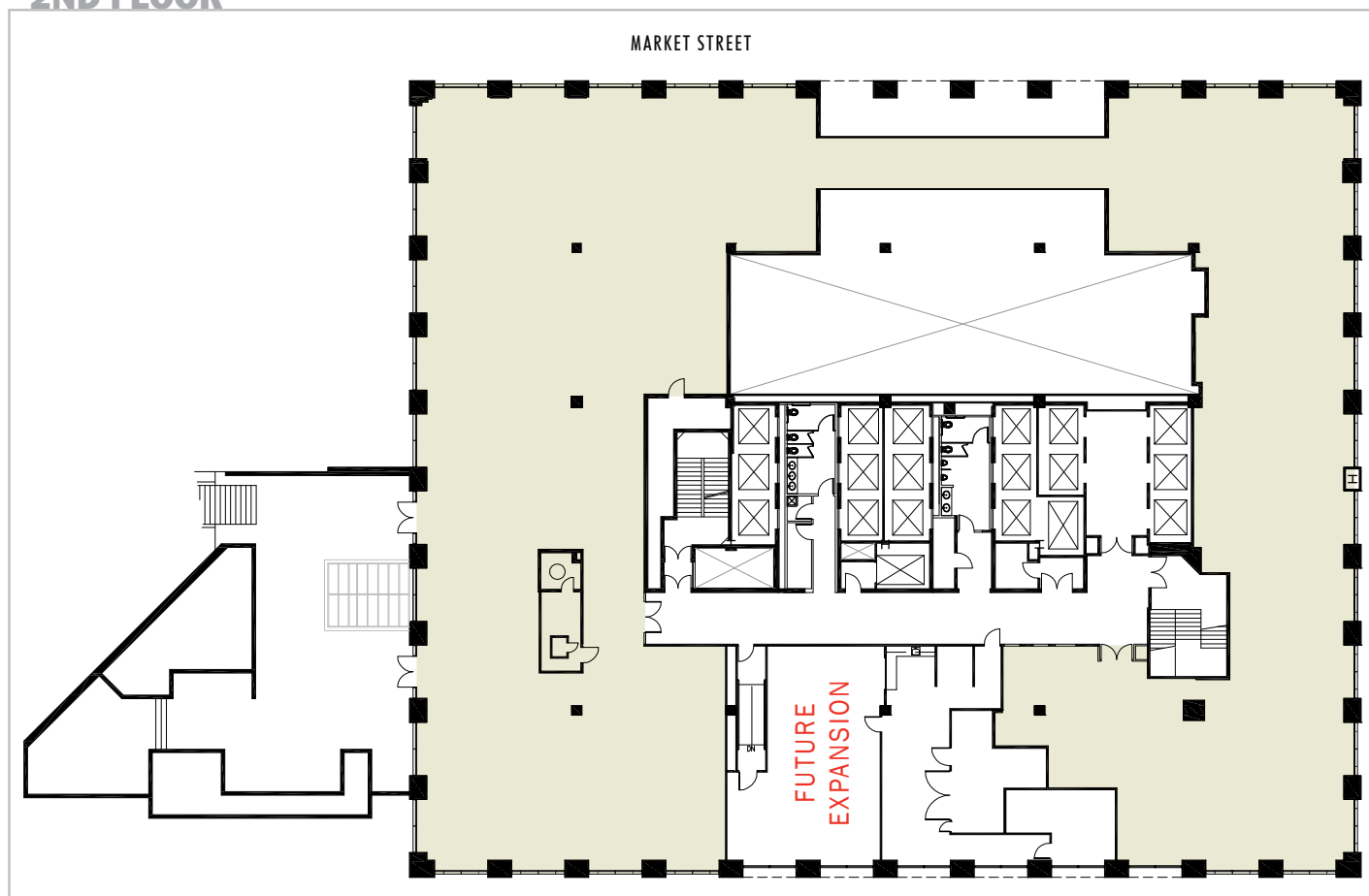
MARK J. ANDERSON
 EXECUTIVE DIRECTOR, LEED AP- LIC. #01325399
 mark.anderson@cushwake.com
 415-773-3583

525

MARKET STREET
SAN FRANCISCO, CA



2ND FLOOR



20,105 – 23,306 RSF

Incredible opportunity for creative environment with exceptional visibility from Market Street. Soaring ceiling heights and flexible floor plan with an estimated delivery for tenant improvements of 7/1/2015

EXCLUSIVE AGENTS

J.D. LUMPKIN
EXECUTIVE DIRECTOR - LIC. # 01215057
jd.lumpkin@cushwake.com
415-658-3648

MATTHEW N. GRIFFIN
SENIOR DIRECTOR - LIC. #01344600
matt.griffin@cushwake.com
415-773-3590

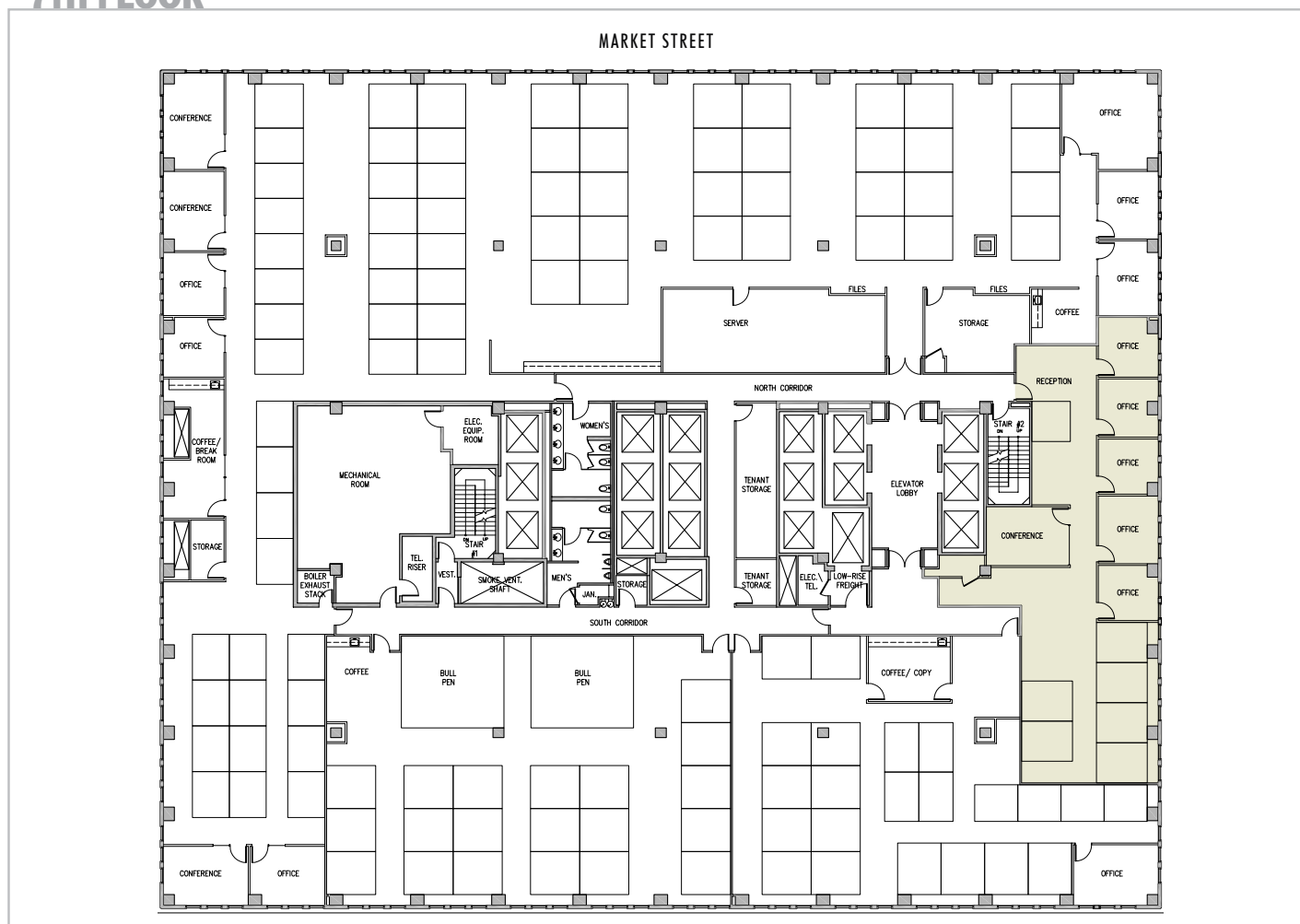
MARK J. ANDERSON
EXECUTIVE DIRECTOR, LEED AP- LIC. #01325399
mark.anderson@cushwake.com
415-773-3583

No warranty or representation, expressed or implied, is made as to the accuracy of the information contained herein, and same is submitted subject to errors, omissions, change of terms, rental or other conditions, withdrawal without notice, prior sale and to any special listing conditions imposed by principals.
CUSHMAN & WAKEFIELD | LIC. #00616335 | 425 MARKET ST, STE 2300, SAN FRANCISCO, CA 94105





7TH FLOOR



- 3,001 RSF
- 5 windowline private offices, 1 interior conference room, open area.

EXCLUSIVE AGENTS

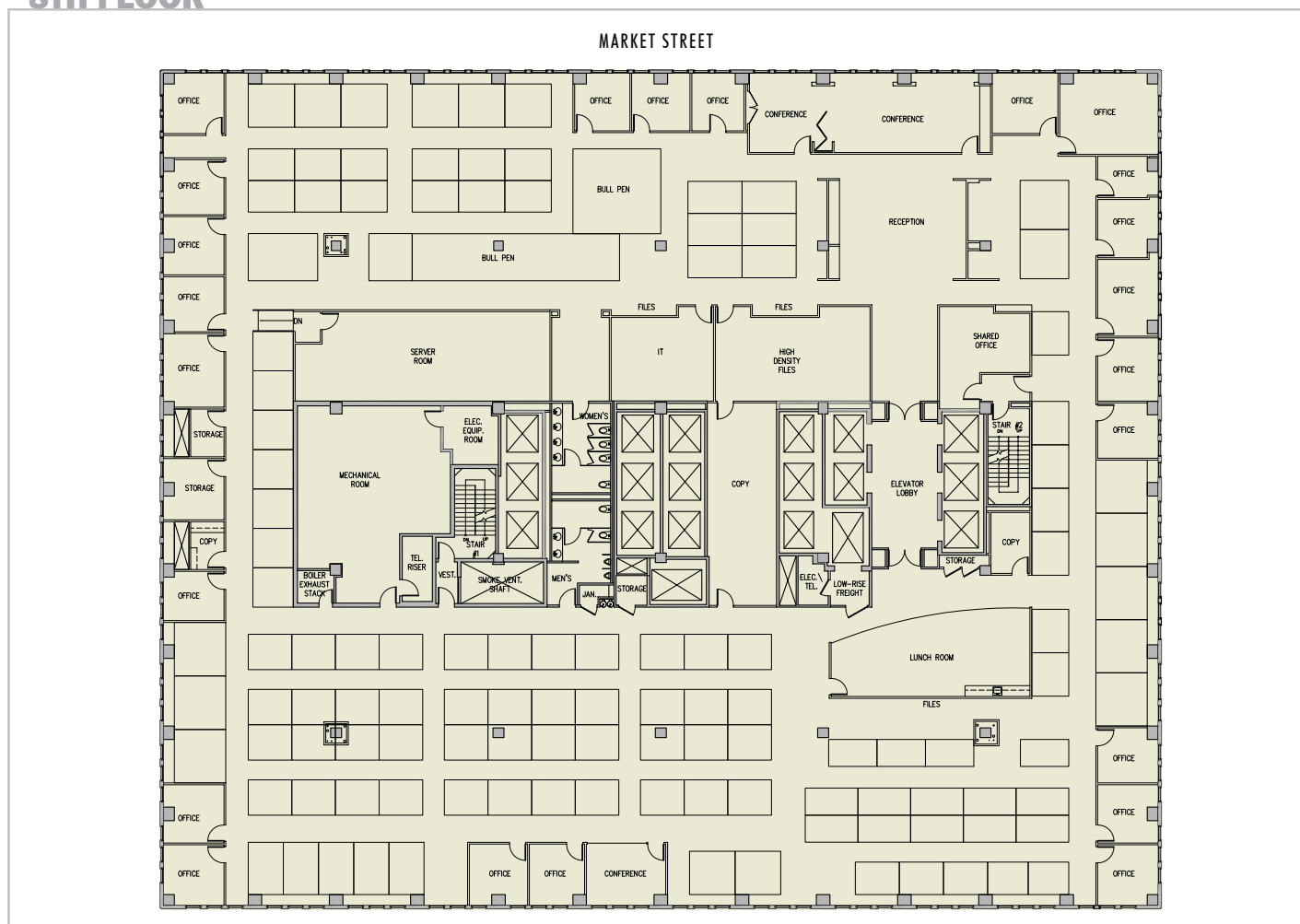
J.D. LUMPKIN
EXECUTIVE DIRECTOR - LIC. # 01215057
jd.lumpkin@cushwake.com
415-658-3648

MATTHEW N. GRIFFIN
SENIOR DIRECTOR - LIC. #01344600
matt.griffin@cushwake.com
415-773-3590

MARK J. ANDERSON
EXECUTIVE DIRECTOR, LEED AP - LIC. #01325399
mark.anderson@cushwake.com
415-773-3583



8TH FLOOR



28,360 RSF

23 windowline private offices, 1 small conference room, 1 large boardroom, high-density file room, larger server room, lunch room, large open area.

EXCLUSIVE AGENTS

J.D. LUMPKIN
EXECUTIVE DIRECTOR - LIC. # 01215057
jd.lumpkin@cushwake.com
415-658-3648

MATTHEW N. GRIFFIN
SENIOR DIRECTOR - LIC. #01344600
matt.griffin@cushwake.com
415-773-3590

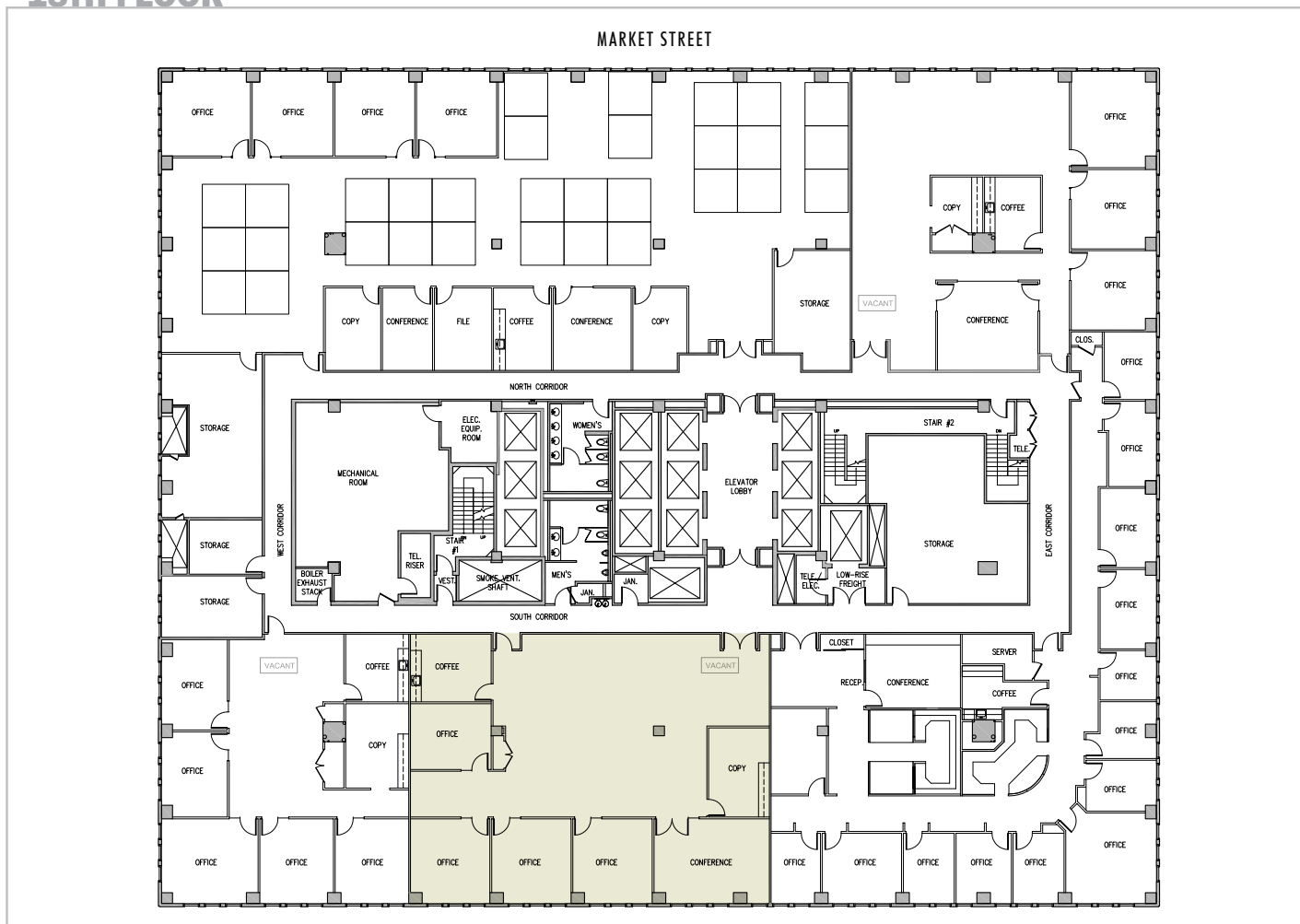
MARK J. ANDERSON
EXECUTIVE DIRECTOR, LEED AP - LIC. #01325399
mark.anderson@cushwake.com
415-773-3583

425 MARKET STREET

SAN FRANCISCO, CA



18TH FLOOR



4,152 RSF

3 windowline private offices, 1 internal private office, kitchen, copy room, 1 conference room, open space.

EXCLUSIVE AGENTS

J.D. LUMPKIN
 EXECUTIVE DIRECTOR - LIC. # 01215057
 jd.lumpkin@cushwake.com
 415-658-3648

MATTHEW N. GRIFFIN
 SENIOR DIRECTOR - LIC. #01344600
 matt.griffin@cushwake.com
 415-773-3590

MARK J. ANDERSON
 EXECUTIVE DIRECTOR, LEED AP - LIC. #01325399
 mark.anderson@cushwake.com
 415-773-3583

No warranty or representation, expressed or implied, is made as to the accuracy of the information contained herein, and same is submitted subject to errors, omissions, change of terms, rental or other conditions, withdrawal without notice, prior sale and to any special listing conditions imposed by principals.
 CUSHMAN & WAKEFIELD | LIC. #00616335 | 425 MARKET ST, STE 2300, SAN FRANCISCO, CA 94105

